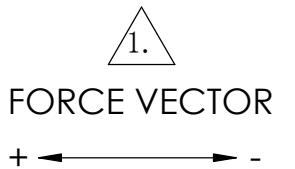
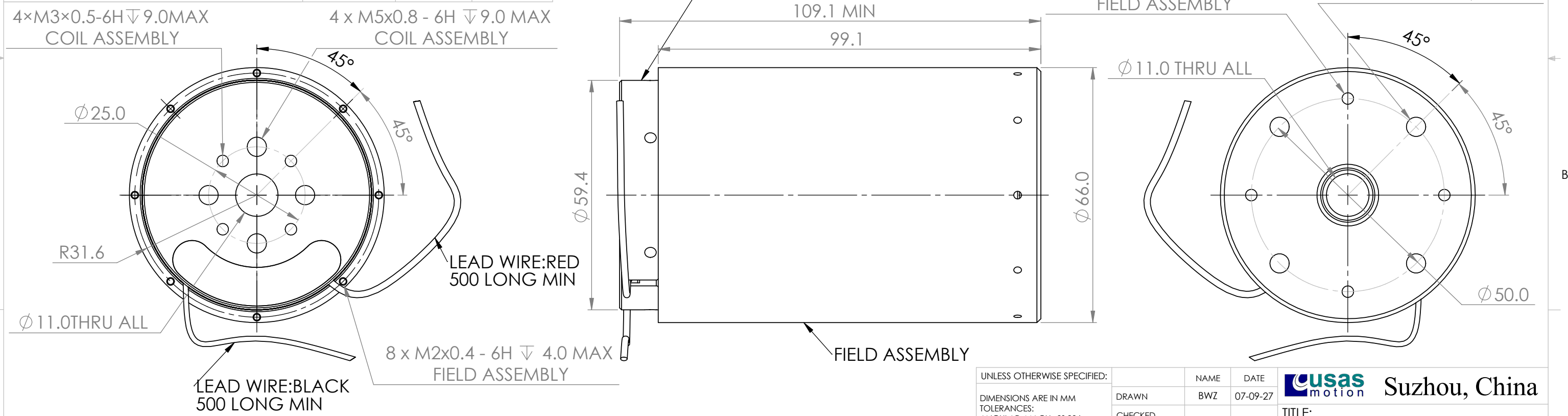
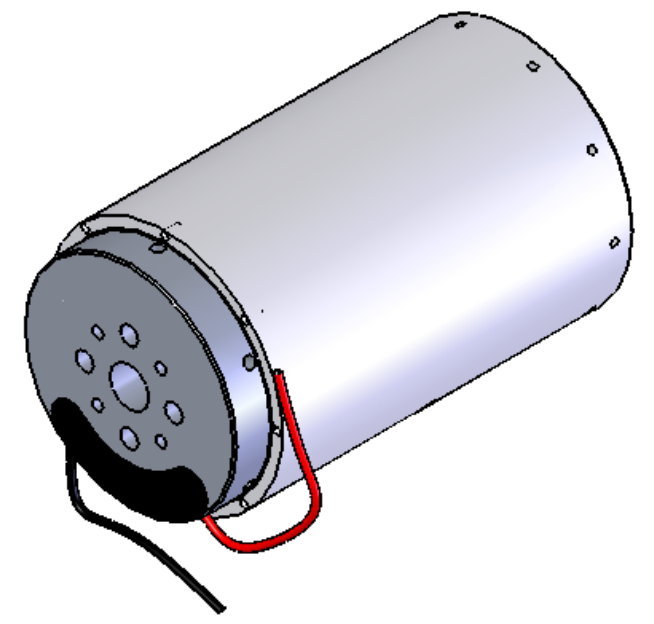


WINDING CONSTANT	TOL	SYM	VALUE	UNITS
DC RESISTANCE	± 10%	R	2.8	OHMS
VOLTAGE @ Fp	NOMINAL	Vp	28.2	VOLTS
CURRENT @ Fp	NOMINAL	Ip	10.1	AMPS
FORCE SENSITIVITY	± 10%	Kf	26	N / A
BACK EMF CONSTANT	NOMINAL	Kb	26	V/M/Sec
INDUCTANCE*****	± 30%	L	5.9	mH

* 10 sec @ 25C ambient, 150C coil temp.
 ** 25C ambient, 150C coil temp.
 *** In free air.
 **** Measured with 250×250×10mm heat sink.
 ***** Measured with TONGHUI TH2821A.

REV	ECO NO.	DESCRIPTION	DRN	APP'D	Q.A.	DATE
X1	---	INITIAL RELEASE	BWZ	WYG	LBQ	07/12/12

ACTUATOR PARAMETER	SYM	VALUE	UNITS
PEAK FORCE *	Fp	262	N
CONTINUOUS FORCE **	Fc	112	N
CONTINUOUS FORCE WITH HEAT SINK	Fc	147	N
ACTUATOR CONSTANT	Ka	15.5	N/√w
ELECT TIME CONSTANT	Te	2.1	milli-sec
POWER I2R@Fp	Pp	284	W
TOTAL STROKE	S	24.9	mm
CLEARANCE ON SIDE OF COIL	CL	0.5	mm
THERMAL RESISTANCE ***	θth	2.4	C / W
THERMAL RESISTANCE WITH HEAT SINK****	θth	1.4	C / W
MAX WINDING TEMP	Tmax	150	C
WEIGHT OF COIL ASSEMBLY	WTc	740	g
WEIGHT OF FIELD ASSEMBLY	WTF	1260	g
WEIGHT OF ACTUATOR	WTa	2000	g



2. INSULATION RESISTANCE: 100 MEGOHMS MINIMUM AT 500 VDC.
 1. A POSITIVE (+) VOLTAGE APPLIED TO THE RED LEAD WILL PRODUCE A FORCE ON THE COIL ASSEMBLY IN POSITIVE (+) DIRECTION.
 NOTES: UNLESS OTHERWISE SPECIFIED

UNLESS OTHERWISE SPECIFIED:
 DIMENSIONS ARE IN MM
 TOLERANCES:
 ANGULAR: MACH $\pm 0^\circ 30'$
 ONE PLACE DECIMAL ± 0.25
 TWO PLACE DECIMAL ± 0.1

INTERPRET GEOMETRIC TOLERANCING PER:
 ANSI Y14.5M-1982.

DO NOT SCALE DRAWING

PROPRIETARY AND CONFIDENTIAL
 THE INFORMATION CONTAINED IN THIS DRAWING IS THE SOLE PROPERTY OF USAS MOTION - SUZHOU, CHINA. ANY REPRODUCTION IN PART OR AS A WHOLE WITHOUT THE WRITTEN PERMISSION OF USAS MOTION - SUZHOU, CHINA IS PROHIBITED.

NAME	DATE
DRAWN: BWZ	07-09-27
CHECKED:	
ENG APPR.: WYG	07-09-27
MFG APPR.:	
Q.A.: LBQ	07-09-27

usas motion Suzhou, China

TITLE:
LINEAR ACTUATOR

SIZE: **B** DWG. NO.: VLR0262-0249-00A REV: X1

SCALE: 1: 1 SHEET 1 OF 1